





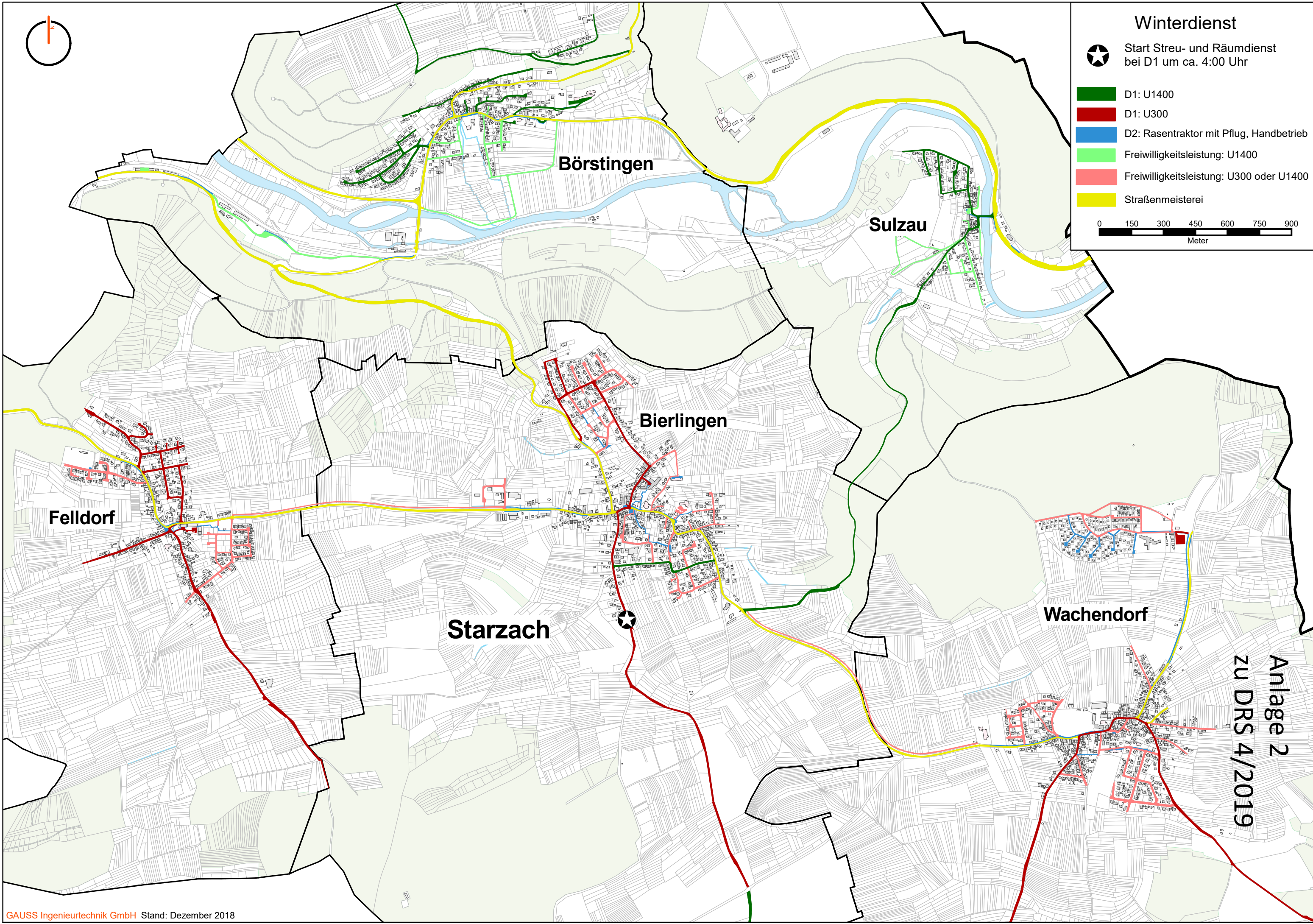
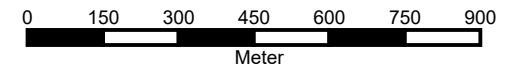


Winterdienst

★ Start Streu- und Räumdienst bei D1 um ca. 4:00 Uhr

-  D1: U1400
-  D1: U300
-  D2: Rasentraktor mit Pflug, Handbetrieb
-  Freiwilligkeitsleistung: U1400
-  Freiwilligkeitsleistung: U300 oder U1400
-  Straßenmeisterei



Anlage 2
zu DRS 4/2019